



510 EARTH

Your Gateway to a Richer Life





510 EARTH

Your Gateway to a Richer Life





GREEN HEIGHTS
(COMPLETED AND HANDED OVER)

WELCOME TO THE
EVERGREEN LIFESTYLE OF RAJARHAT

GREEN HEIGHTS II, spread over more than 1.63 acres is a well planned mega residential complex. It is an ensemble of luxurious lifestyle, which fulfills all your expectations of the dream home you have been looking for, at affordable price, which makes you smile.

STROLL, JOG, WALK, CHAT AND CHEER
CHERISH LIFE'S DELIGHTS
AROUND EVERY CORNER





A HIGH-RISE OF
HIGH-END SERVICES & UTILITIES
RISING UP TO SERVE THE
HIGHER ORDER OF LIFE

Green Heights-II optimizes vast open area to ensure maximum level of comfort and luxury to the resident. The project has been designed in such a fashion so that light, air cross-ventilation and security will not be a matter of concern. The objective behind Green Heights-II is to provide premium living to the one who aspires for.

PROJECT HALLMARKS

- A gated residential complex with 3 magnificent towers of 12 & 13 storey
- More than 70% open area with Ultramodern Amenities
- 500 mtrs from six lane expressway
- 216 well-designed apartments
- Available in 2 & 3 BHK
- Multi-level ample covered Car Parking Spaces

WITNESS THE THOUGHTFULLY PLANNED
TOWER FACILITIES & UTILITY SERVICES

- Automated elevators in each block
- 24 hours CCTV security
- 24 hours Power backup
- Rain water harvesting system
- Fire fighting systems
- Water filtration plant
- Sewage treatment plant
- Fully automatic elevators
- Intercom network
- Cable TV provision



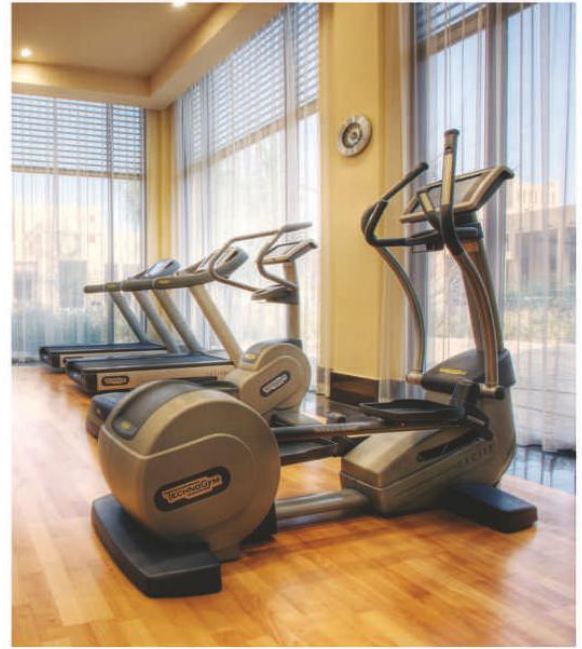
**510
EARTH**

TOP PROPERTY | BEST DEALS



Club 360°

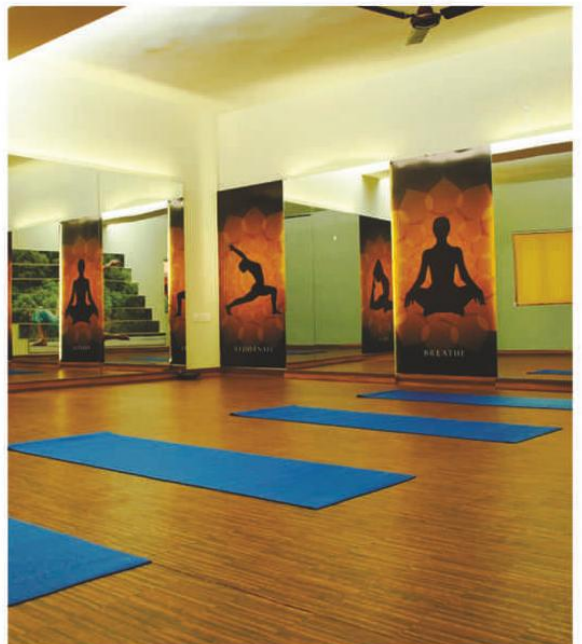




RECREATIONAL ARRANGEMENTS

Membership of the Club 360° : An existing club at Green Heights (A residential complex adjoining the Green Heights-II) , has been designed to provide all the latest and Ultra-Modern lifestyle facilities and amenities to suit your choice of living.

- Decorated Club Lounge
- Sauna & Steam Bath
- Modern Multi Gymnasium
- Coffee Corner
- A.C Banquet Hall with Kitchen
- Guest Room with attach Toilet
- Games Room
- Table Tennis & Pool Table
- Indoor Swimming Pool & Baby Pool
- Yoga & Meditation Room
- Library / Reading Room
- Kids Play Area
- Fully Automatic Elevator
- Card Room





**510
EARTH**

TOP PROPERTY | BEST DEALS





DESIRE, DWELL, DREAM & RELISH
MEET LIFE IN ITS
MOST ELEGANT SPACE
EXTRAORDINARY APARTMENT LUXURIES & FITMENTS

- **Structure** : Earthquake resistant RCC framed construction.
- **Internal Walls** : Cement plastering overlaid with smooth impervious wall / Putty.
- **Doors** : Wooden door frame with 30mm thick flush door.
- **Windows** : Aluminium windows with large glass panes.
- **Flooring** : Vitrified tile flooring in all Bedrooms, living/dining room and common areas.
- **Kitchen** : Floor finished with ceramic tiles, counter top finished with granite and steel sink, dados made of ceramic tiles upto a height of 2 feet from the granite top.
- **Toilet** : Floor finished with ceramic tile flooring, dados made of ceramic tiles upto a heights of 6 feet.
- **Sanitary Ware** : White, high quality porcelain fitting. Chromium-plated fitting of Jaquar or equivalent. Geyser point in all bathrooms and one washing machine point in balcony.
- **Electrical** : Superior quality concealed wiring with modular switches and miniature circuit breakers. TV socket & broadband connection. AC points in all bedrooms.
- **Telephone Wiring** : Central distribution box at ground floor and wiring to each apartment, with provision for points in the living hall.
- **Exterior Paint** : Latest weather proof exterior finish.

DISCOVER
THE CLASS, COMFORT
& ELEGANCE, CREATING A UNIQUE
EXPERIENCE CALLED HOME

STAY IN YOUR ABODE WITH ELEGANTLY CRAFTED
APARTMENT LUXURIES



**510
EARTH**

TOP PROPERTY | BEST DEALS



Master Plan

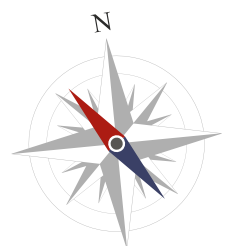


**510
EARTH**

TOP PROPERTY | BEST DEALS



- ① AMPHITHEATRE
- ② CENTRAL PARK
- ③ CHILDREN PLAY AREA
- ④ BADMINTON COURT
- ⑤ SENIOR CITIZEN ADDA ZONE

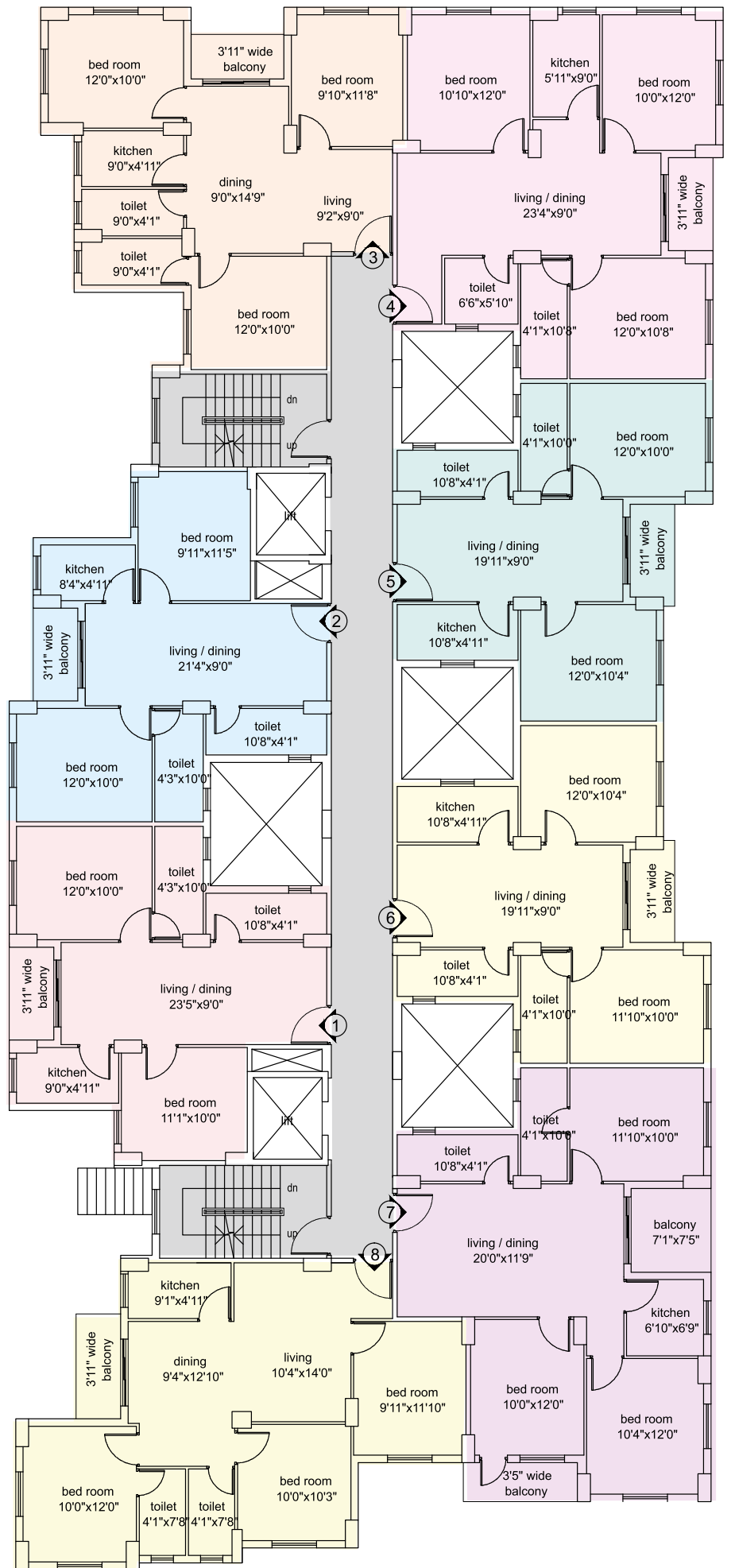
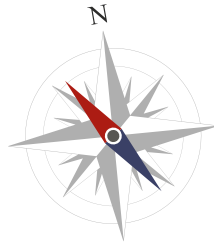




510 EARTH

TOP PROPERTY | BEST DEALS

Typical Floor Plan Block - A



Block - A

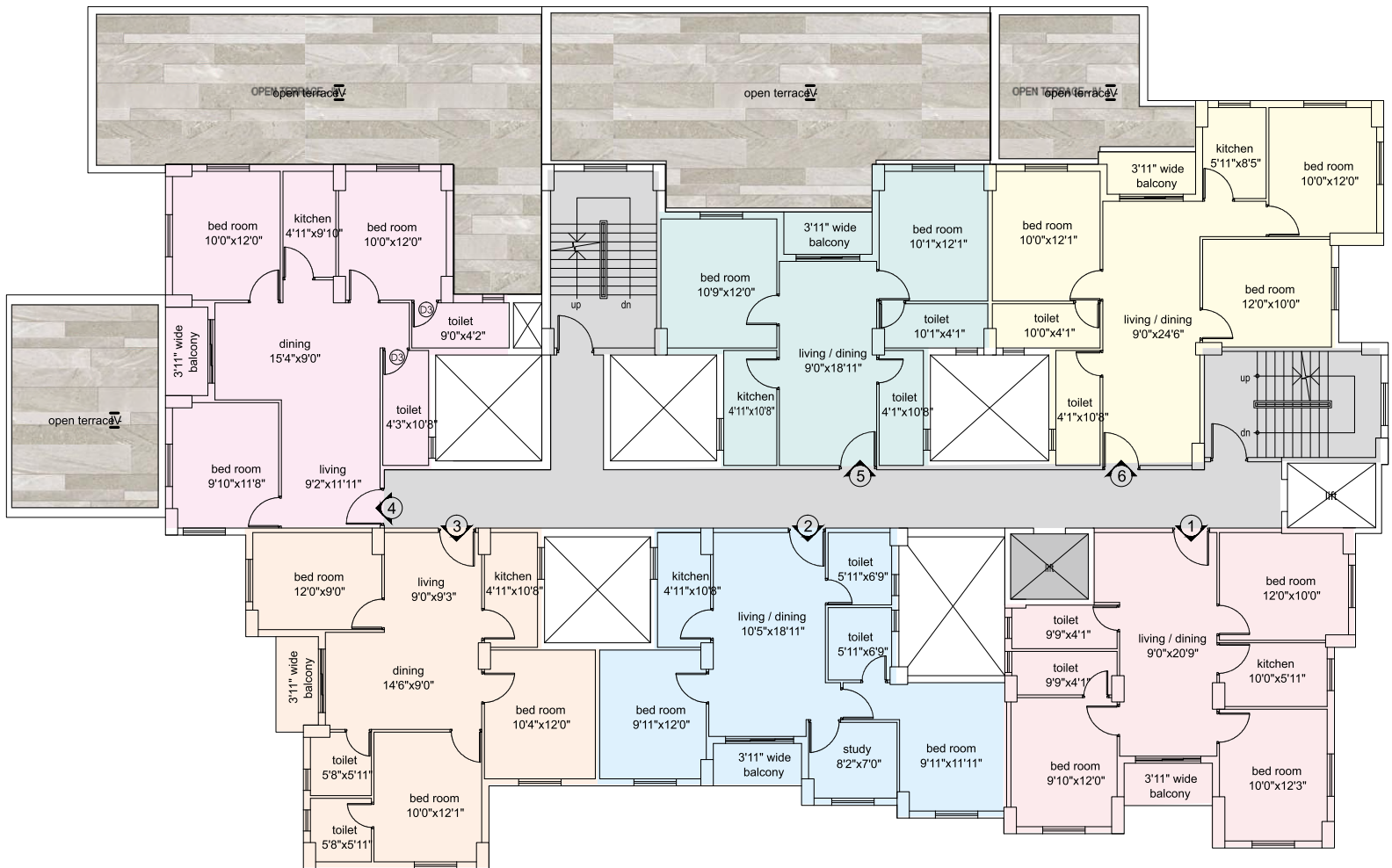
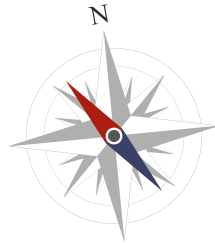
FLAT NO	BUILT-UP (SQ.FT)	CARPET (SQ.FT)	BALCONY-1 (SQ.FT)	BALCONY-2 (SQ.FT)
1	690	598	32	-
2	670	576	32	-
3	820	718	32	-
4	888	794	32	-
5	674	584	33	-
6	672	583	33	-
7	923	767	35	52
8	859	754	36	-



510 EARTH

TOP PROPERTY | BEST DEALS

Typical Floor Plan Block - B



Block - B

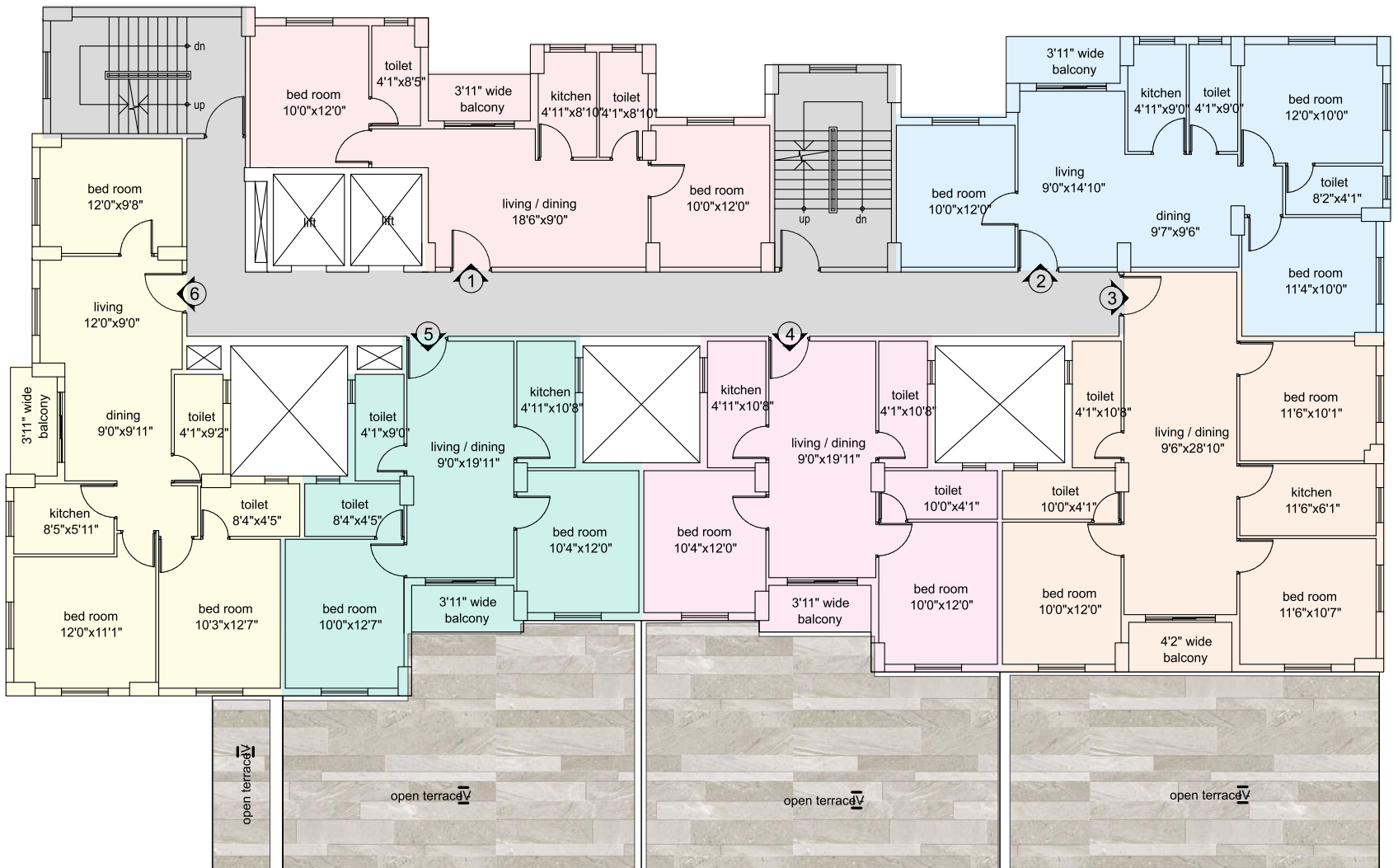
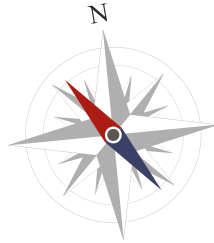
FLAT NO	BUILT-UP (SQ.FT)	CARPET (SQ.FT)	BALCONY-1 (SQ.FT)	TERRACE (SQ.FT)	TERRACE (SQ.FT)
1	834	731	32		
2	774	673	32		
3	814	712	34		
4	898	780	32	721	305
5	676	583	32	693	
6	874	767	33	230	



510 EARTH

TOP PROPERTY | BEST DEALS

Typical Floor Plan Block - C



Block - C

FLAT NO	BUILT-UP (SQ.FT)	CARPET (SQ.FT)	BALCONY-1 (SQ.FT)	TERRACE (SQ.FT)
1	690	590	34	
2	838	739	38	
3	917	818	36	532
4	674	583	35	578
5	669	576	35	643
6	874	764	34	87



LOHARUKA is one of the most experienced and reputed real estate developer and has built a reputation of providing beautiful and affordable homes for different strata of the Society. You will have a touch of experience and a flavor of innovation in each and every project of LOHARUKA.

LOHARUKA glorifies themselves not only by words but by deeds. Till now the company has completed several landmark projects in Kolkata. Currently the company is working on many projects in Kolkata, Pune and Bangalore.

The brand LOHARUKA has become very successful due to two simple philosophies "Reliability and Excellence".

“Stay happy”



GREEN LEAF - VIP ROAD, KOLKATA



GREEN RESIDENCY - KAIKHALI, KOLKATA



GREEN ENCLAVE - RAJARHAT, KOLKATA



GREEN VISTA - ATHGHARA, KOLKATA



GREEN OASIS - KAIKHALI, KOLKATA



GREEN CHINAR - NEWTOWN, KOLKATA



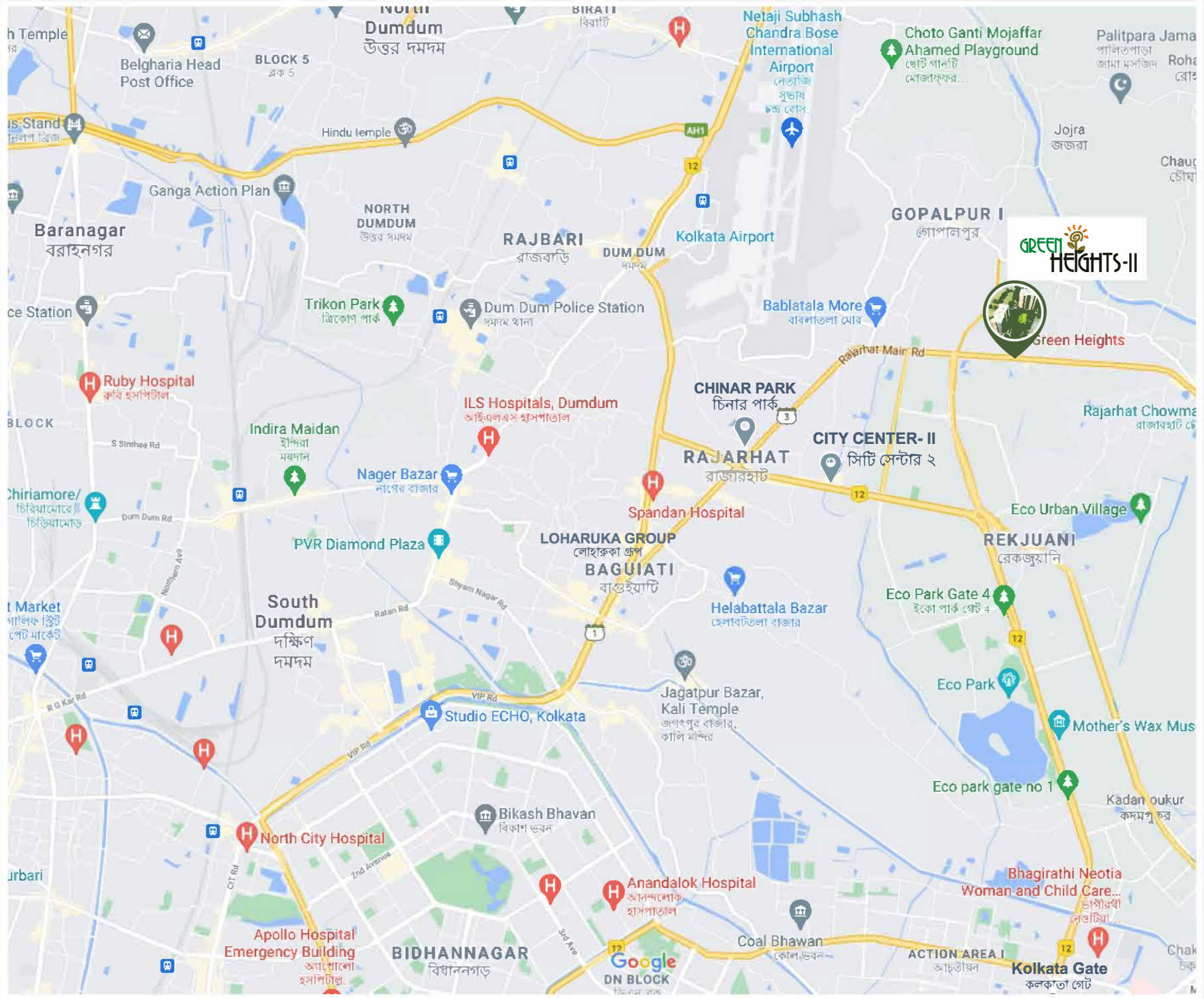
URBAN GREENS - RAJARHAT, KOLKATA



GREEN CITY - HANDEWADI, PUNE



LITTLE EARTH - KIWALE, PUNE



RAJARHAT

AN UPSCALE RESIDENTIAL ADDRESS OF NORTHERN SUBURBS
 ADDRESSING MODERN LIFESTYLE CONVENIENCES & SUPREME CONNECTIVITY

KEY DISTANCES : Major Arterial Road 0.5 km • City Center II 1.5 km • Airport 3.5 km • Haldiram 2 km



Marketing Partner :



www.510earth.com

OFFICE : Stesalit Towers, Office #7, 4th floor Plot No E2-3,
 Block - EP & GP, Sector V, Salt Lake, Kolkata - 700091

Contact No: +91-9073338396

Disclaimer: This brochure is only a conceptual presentation and not a legal offering. The images, design, layout and sizes of the flats and the details of facilities and amenities as shown here are tentative and are subject to change at the sole discretion of developer without any reference.